



# PROSVASI

The Accessibility Center  
for Students with Disabilities  
at the University of Thessaly

## AIM OF PROSVASI

*The aim of PROSVASI of the University of Thessaly is to support the students with disabilities and/or special educational needs as well as the staff of the University of Thessaly who interact with these students regarding their learning, social and spatial accessibility of the University of Thessaly.*

## WHO CAN REGISTER IN PROSVASI?

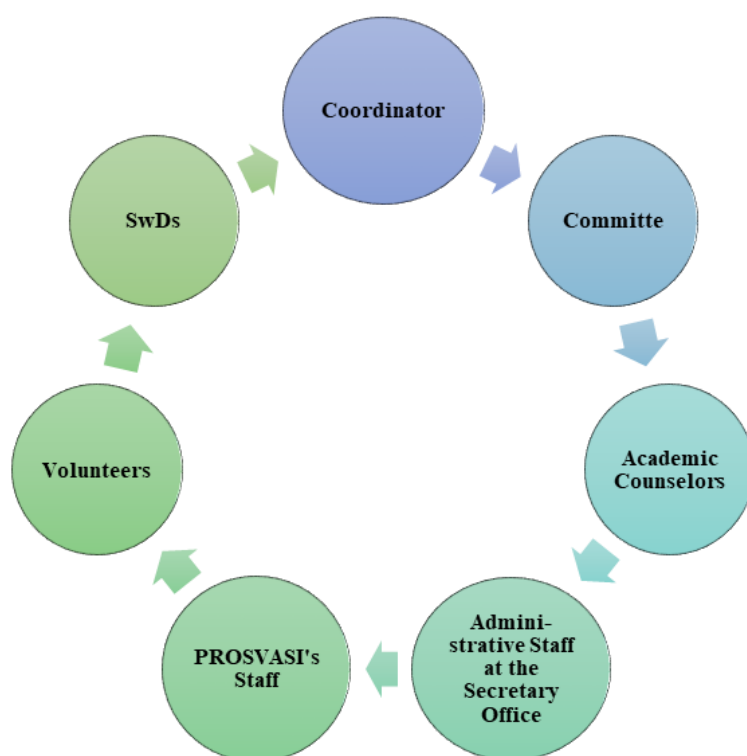
Students with disabilities and/or special educational needs can register in PROSVASI. Specifically, students with:

- ✓ Special Learning Disabilities (dyslexia, dysorthographia, dyscalculia etc.)
- ✓ Attention Deficit with or without Hyperactivity Disorder (ADHD)
- ✓ Sensory disabilities (vision disability, deafness/hearing impairment)
- ✓ Physical disabilities
- ✓ Talking and Speech Disabilities
- ✓ Autistic spectrum disorders
- ✓ Chronic health problems (cancer, diabetes, heart disease etc.)

*(Law 3699/2008 “Special Education of people with disabilities or special educational needs”)*

\*Students with mental and neuropsychiatric disorders and complex emotional difficulties can contact the Service of Psychological Counseling and Support for Student of the University of Thessaly.

## PROSVASI'S MEMBERS



**PROSVASI's Coordinator:** Magda Nikolarazi is Coordinator of PROSVASI - the Accessibility Centre for students with disabilities, Associate Professor in special education-education of persons who are deaf, Department of Special Education of the University of Thessaly.

**PROSVASI's Committee:** The PROSVASI's Committee consists of twelve lecturers from all faculties of the University of Thessaly who meet with each other to discuss important issues and make crucial decisions about PROSVASI's.

**Academic Counselors:** In each Department of the University of Thessaly, there is one lecturer as an Academic counselor. The role of the Academic counselors is to inform students and other lecturers of their department about PROSVASI's actions and to collaborate with PROSVASI to enhance the access of students with disabilities and/or special educational needs.

**Administrative staff at the Secretary office:** A member in the secretary office of each Department of the University of Thessaly has been designated to collaborate with **PROSVASI** and students with disabilities and/or special educational needs.

**PROSVASI's staff:** **PROSVASI**'s staff includes professionals who inform and support students with disabilities and/or special educational needs, lecturers, assess the needs and design coordinate programs of students with disabilities and/or special educational needs as well as volunteers.

**Volunteers:** **PROSVASI**'s volunteers are undergraduate students of the departments of the University of Thessaly, who participate in the implementation of support programs, which are designed and coordinated by the staff of **PROSVASI**.

## SERVICES OF PROSVASI

The services of **PROSVASI** are constantly changing to meet the individualized needs of students with disabilities and/or special educational needs as they arise each academic semester. Indicatively, the most important services of **PROSVASI** are provided in person and/or at a distance and are listed below:

- ✓ Needs assessment and a personalized information letter with suggestions for lecturers in order to enhance the access to courses (monitoring and evaluation)
- ✓ Familiarizing with facilities and services
- ✓ Moving or Transportation
- ✓ Use of digital applications
- ✓ Assistive technology and equipment
- ✓ Communication issues with lecturers and administrative staff of the University of Thessaly
- ✓ Attending and participating in lectures (notetaking, interpretation in Greek Sign Language)
- ✓ Accessible educational material (e.g. braille, magnified, subtitled)
- ✓ Accessible books in collaboration with the Library of University of Thessaly
- ✓ Assignments and examinations
- ✓ Seminars and workshops in order to cultivate various skills that play an important role in the accessibility of students with disabilities and/or special educational needs

In combination with the above, **PROSVASI** provides suggestions for the accessibility in the built environment regarding existing buildings or buildings of the University of Thessaly which are under construction. It also organizes actions and events to promote the participation of students with disabilities and/or special educational needs in social activities of the University of Thessaly.

**For more information, you can contact us either in person or at a distance.**

---

**Volos:** Ground Floor, Iasonos 62, 38221, Volos

**Tel.:** +30 24210 74345 and +30 24210 7433

**Larissa:** Campus Geopolis, Ring Road Farsala – Trikala, 41500, Larissa

**Tel.:** +30 2410 684396

**Office contact days and hours:** Monday until Friday, 10.00 – 15.00

**Email:** [prosvasi@uth.gr](mailto:prosvasi@uth.gr)

**Skype Name:** ΠΡΟΣΒΑΣΗ Π.Θ.

**Facebook:** [Πρόσβαση Πανεπιστημίου Θεσσαλίας - Accessibility Centre, University of Thessaly](#)

---